

ESSL Research and Training Centre

Wiener Neustadt, Austria

Upcoming Activities



Seminars
Courses
Workshops
ESSL Testbed
Conferences

Edition: Autumn 2014

www.essl.org

ESSL

European Severe Storms Laboratory – Science and Training

Braeunlichgasse 6a/6

2700 Wiener Neustadt

Austria, Europe

Contact:

Magdalena Pichler

magdalena.pichler@essl.org

Phone +43 664 59 35 330

Fax +49 8151 9659 99911



Word of the ESSL Directors

Dear colleagues,

We are very happy to present you the latest edition of our ESSL activity programme. It contains a growing selection of seminars, workshops, courses and conferences – all related to high impact weather and severe convective storms.

The ESSL provides a European platform for the exchange of knowledge and offers high-quality training in the field of severe weather. We cooperate with renowned partners and experts, and we try to offer an optimal environment for all of our educational and scientific activities. We think that small groups and a cosy and concentrated atmosphere are key to their effectiveness. We are happy to be able to welcome you in an “Art Nouveau” style building with wooden floors and big windows for much daylight, together with a good choice of coffee and teas and some snacks in our break room.

Travelling to our centrally located ESSL Research and Training Centre is easy. Situated in Wiener Neustadt, it is only a short trip by train or car from Vienna International Airport. The city of Vienna itself is not more than half an hour by train. In addition, Wiener Neustadt’s central railway station offers direct connections to European cities such as Warszawa, Prague, Hamburg, Zagreb, Ljubljana or Rome – and via Vienna to many more. From the railway station it is just a few minutes by foot to ESSL. Likewise, it is just a short walk across the municipal park to the nearest hotels that offer rooms at very moderate rates compared to most central European locations.

We invite you to choose from our range of activities. If you cannot find a suitable offer, please do not hesitate to contact us with your inquiry.

Dr. Pieter Groenemeijer

Dr. Kathrin Riemann-Campe

Alois M. Holzer

Calendar

Date	Event	Additional Information	Early rate until	Registration Deadline
25 – 29 May 2015 1 - 5 June 2015 15 - 19 June 2015 22 - 26 June 2015	ESSL Testbed 2015		1 Feb 2015	
29 June - 3 July 2015	Workshop: Dynamics and Prediction of Severe Thunderstorms (Forecasting Severe Convection II)	by Dr. Johannes Dahl, USA	1 Feb 2015	
7 - 11 September 2015	EMS Annual Meeting and ECAM	co-sponsored by ESSL, in Sofia, Bulgaria		
14 - 18 September 2015	ECSS 2015	in Wiener Neustadt, Austria		
21 - 26 September 2015	Seminar: Forecasting Severe Convection I	by Dr. C. A. Doswell III, USA	1 May 2015	1 Jul 2015
5 – 8 September 2016 (tentatively)	Workshop (pre-announcement): Tornado and Windstorm Damage Assessment	in Wiener Neustadt, Austria		
11 - 16 September 2016	EMS Annual Meeting and ECAC	co-sponsored by ESSL, in Triest, Italy		
27 – 29 September 2016 (tentatively)	Workshop (pre-announcement): Identification and Classification of Subtropical and Tropical Storms in the Mediterranean	in Wiener Neustadt, Austria		
10 - 15 September 2017	EMS Annual Meeting and ECAM	co-sponsored by ESSL, in Dublin, Ireland		

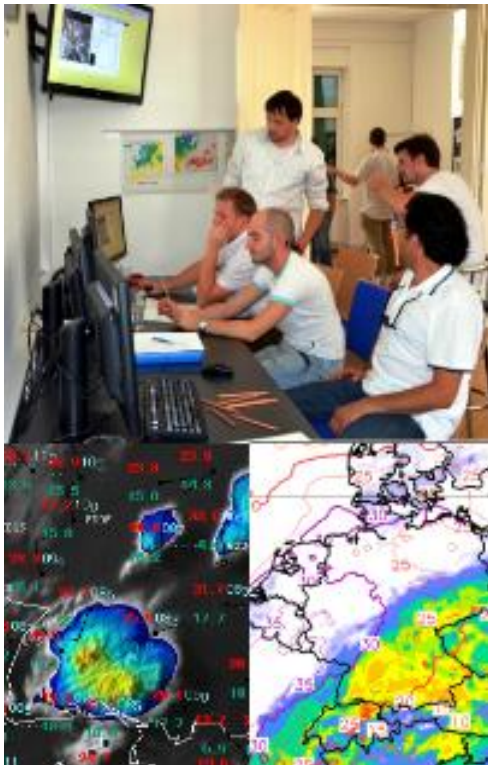
Printable registration form on the last page.

ESSL Testbed 2015

25 – 29 May, 1 - 5 June, 15 - 19 June, 22 - 26 June

*The ESSL Testbed is a project to enhance severe weather forecasting across Europe. The Testbed provides **forecaster training, testing of forecasting tools, and is a platform for interaction** for researchers and forecasters.*

A growing range of tools is steadily becoming available for weather forecasters as a basis for their forecasts and warnings. These are, however, not always used optimally, because of a lack of interaction between their developers and the forecasters. Additionally, there is a lack of international exchange of “best practices” on forecasting extreme weather events. Therefore, the ESSL Testbed, as a permanent facility, will bring together forecasters and developers from across the world: In a quasi-operational setting with a focus on severe weather, developers will present and explain their tools, forecasters give feedback, and the tools are put to the test. The core activity of the Testbed is the preparation of experimental severe weather forecasts.



We will be adding information on the 2015 Testbed programme as it is planned on our Testbed webpage www.essl.org/testbed. There you can also register. At the 2015 Testbed edition, there will be a number of new Testbed products, but only minor changes in the overall programme structure compared to earlier Testbeds.

Prices for Testbed (one week, Mon - Fri)	Early Fees until 1 Feb 2015	Normal Fees
ESSL members and employees of institutional ESSL members	EUR 1.190,-	EUR 1.290,-
Non ESSL members	EUR 1.290,-	EUR 1.490,-

Workshop:

Dynamics and Prediction of Severe Thunderstorms

(Forecasting Severe Convection II)

by Dr. Johannes Dahl, Ass. Prof., Atmospheric Science Group, Texas Tech University - and ESTOFEX

from 29 June to 3 July 2015

ESSL Research and Training Centre

Wiener Neustadt, Austria



Much progress has been made in forecasting severe thunderstorms during the past decades owing to an improved understanding of the governing processes, better remote-sensing capabilities, and increased computer power. The goal of this workshop is to provide the participants with a robust, up-to-date conceptual understanding of the governing processes and forecasting strategies.

Specific topics that will be covered, among others, include synoptic- and mesoscale lift, the spectrum of convective storm organization, severe weather phenomena such as large hail and tornadoes, and ingredients-based forecasting.

The forecasting aspect is focused on assessing the overall severe convective threat over a given region as well as nowcasting storm development including the convective evolution once storms are underway. In the morning sessions, we will cover the background material, and in the afternoon sessions there will be hands-on analysis and forecasting exercises using real-world cases.

Prices for workshop (Monday - Friday)	Early Fees until 1 February 2015	Regular Fees
ESSL members and employees of institutional ESSL members	EUR 790,-	EUR 890,-
Non ESSL members	EUR 890,-	EUR 990,-



ECSS 2015

8th European Conference on Severe Storms

Wiener Neustadt, Austria

14 - 18 September 2015

Venue: Sparkassensaal Wiener Neustadt

Scope

The scope of the conference covers all aspects of severe convective storms. Researchers, operational forecasters, and risk and emergency managers are invited to submit contributions. In light of the global relevance of the conference themes, participants from all over the world are encouraged to attend. These are the conference topics (and tentative session titles):

- Impact of storms on society and impact mitigation
- Convective storm and tornado dynamics
- Numerical modelling of storms, storm-scale data assimilation
- Convective storms within extratropical, Mediterranean and tropical cyclones
- Floods and flash floods
- Forecasting and nowcasting of severe weather
- Severe weather forecasting training
- Satellite studies of storms and their environment
- Radar studies of storms
- Storm electrification, lightning, microphysics and hail
- Storm climatologies, risk assessments and climate change
- Collection of storm data, historical events and damage assessments

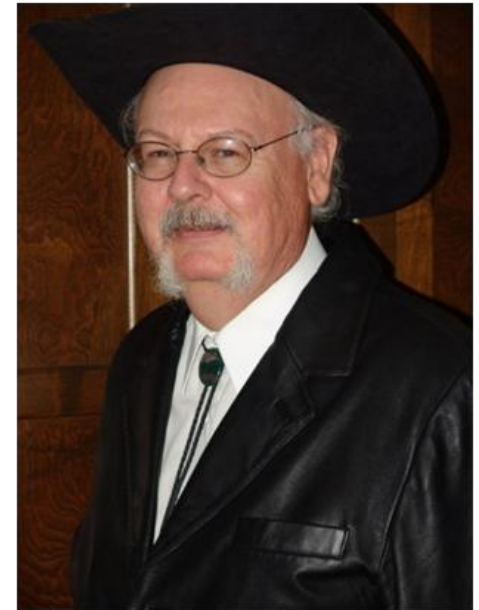
Please consult our webpage www.ecss.eu for details and registration.

Seminar: 21 – 25 September 2015

Forecasting Severe Convection I

by Dr. Charles A. Doswell III

The application of meteorological diagnosis to the problem of forecasting severe deep convection is demonstrated, emphasizing ingredients-based forecasting methods.



Topics:

- Ingredients-based forecasting concepts
- Principles of meteorological diagnosis
- Atmospheric convection
- Mesoscale processes
- Severe storm forecasting

Case studies will be used to illustrate the application of these principles and short, hands-on exercises will be provided to illustrate the techniques presented:

Day 1 – Morning lecture: Ingredients-based forecasting concepts.	Afternoon: US case study - diagnosis and prognosis.
Day 2 – Morning lecture: Principles of meteorological diagnosis.	Afternoon: European case study - diagnosis only.
Day 3 – Morning lecture: Atmospheric convection.	Afternoon: European case study – diagnosis and prognosis.
Day 4 – Morning lecture: Mesoscale processes.	Afternoon: European case study - diagnosis and prognosis.
Day 5 – Morning lecture: Severe storm forecasting.	

More information about forecasting severe convection and about Dr. Doswell: <http://www.flame.org/~cdoswell/>

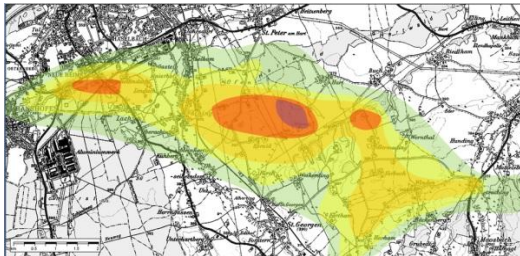
Prices for seminar (Monday - Friday)	Early Fees until 1 May 2015	Regular Fees
ESSL members and employees of institutional ESSL members	EUR 790,-	EUR 890,-
Non ESSL members	EUR 890,-	EUR 990,-

Workshop: 5 – 8 September 2016 (tentatively)

Tornado and Windstorm Damage Assessment

by the ESSL Team and expert guests

The workshop is focused on a special field of “Forensic Meteorology”: to determine the type of a past damage event (windstorm or tornado) and to estimate the strength of the maximum wind.



Topics:

- Importance of damage assessment for severe storm climatology (with emphasis on ESWD)
- Methods of damage survey and application of wind damage scales
- Selected case studies and/or a current field study, if a recent case is within reach
- Expert discussion on damage assessment methods and their future development

Target audience (not exclusively):

- Persons involved in the Quality Control process of ESWD data
- Persons involved in damage assessment activities of national weather services, other government agencies and commercial entities like insurances

Prices for workshop (Monday - Thursday)	Early Fees until 1 March 2016	Regular Fees
ESSL members and employees of institutional ESSL members	EUR 790,-	EUR 890,-
Non ESSL members	EUR 990,-	EUR 1090,-

Registration Form

Activity (name of event):

<p>You</p>	<p>Title</p> <p>First Name</p> <p>Last Name</p> <p>Organization (Department)</p> <p>E-mail Phone number</p>
<p>Invoice Address This is the address on your invoice, except when taking part in a supporting programme.</p>	<p>Organization</p> <p>Street + number</p> <p>Postcode</p> <p>City Country</p>
<p>Preferred date(s) of participation (if applicable)</p>	

We prefer online registrations at www.essl.org .

Alternatively you can mail, fax or email this form to:

Date and Signature:

ESSL

Braeunlichgasse 6a/6

2700 Wiener Neustadt

Austria, Europe

magdalena.pichler@essl.org

Fax: +49 8151 9659 99911

Your registration will only be fixed after having received your participation fee and after confirmation from ESSL.